

Welcome to

# Kings Academy College Park



King's Group  
*Academies*



# Kings Academy College Park

1 of 14 schools within the Kings  
Group Academy.

Two schools, one vision.



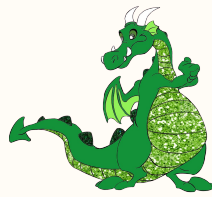
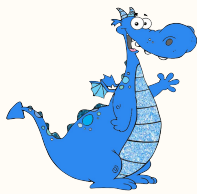


# Meet the Team

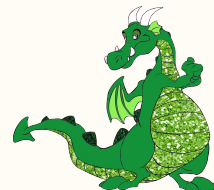
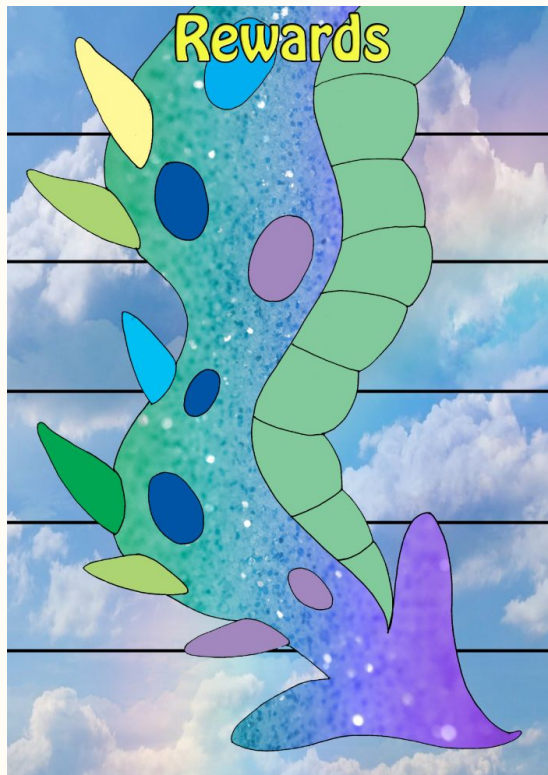
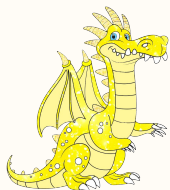
**Mrs Carlyle (Headteacher)**

**Miss Pullen (Deputy Headteacher)**

**Miss Cooper (EYFS Lead)**



# Our Dragon Values



# Our Behaviour Policy

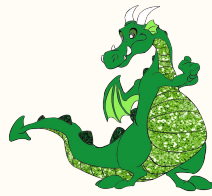
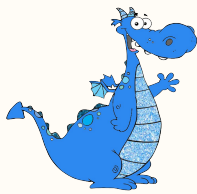
The school's behaviour curriculum is embodied by the KACP Way which promotes the school culture:

- Openness and willingness to learn
- Acknowledging success
- Honoring the wisdom in the room
- Respect for each other and different views
- Language is important and reflects our value
- Keep ourselves safe and support each other



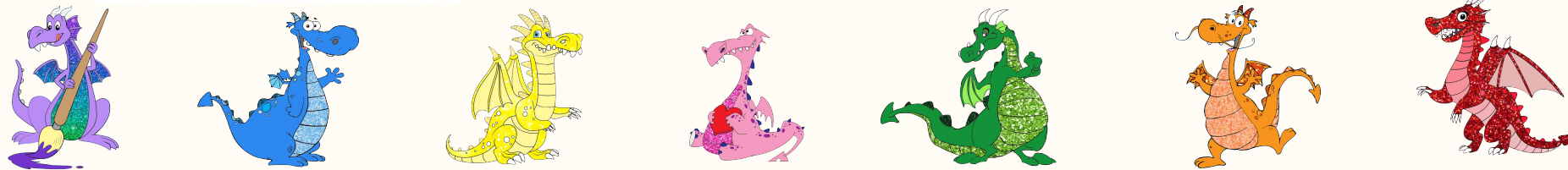
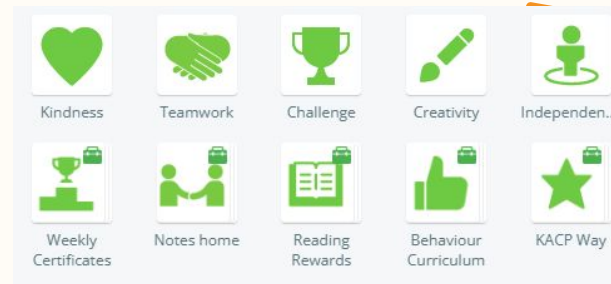
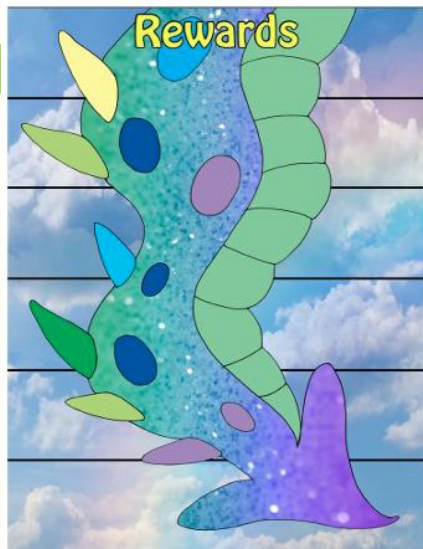
# Our Behaviour Policy

- The behaviour curriculum then sits underneath this and sets out what children are expected to do:
- Accept when things do not go their way and respond appropriately
- Conduct themselves in a sensible manner when moving around the school and treat resources with respect.
- Contribute to lessons and try their best at all times.
- Create an environment that makes it possible for everyone to be successful.
- Be the best they can be in new and different situations.
- Be respectful and kind to others through their actions and words.



# Our Behaviour Policy

## Responding to positive behaviour



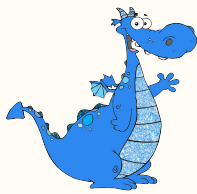
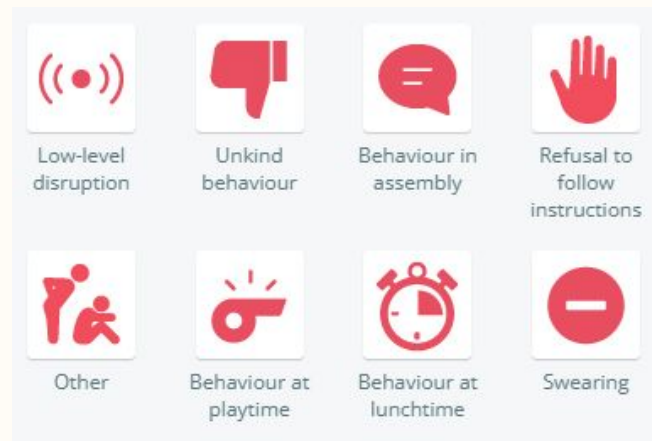


# Our Behaviour Policy

## Behaviour Interventions

	 Guided Reflection Booklet			

Page 1 / 7

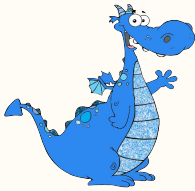




# EYFS at Kings Academy College Park

Our Early Years Foundation Stage allows children to explore and learn in a secure, safe and fun environment.

We use the EYFS Statutory Framework to support us in providing a broad and balanced curriculum that will allow children to develop the foundation of skills they will need to support them in their future learning.



# The EYFS Framework

The EYFS Framework includes 7 areas of learning and development that are equally important and inter-connected.

## Prime Areas:

- Communication and Language
- Physical Development
- Personal, Social and emotional development

## Specific Areas:

- Literacy
- Mathematics
- Understanding the World
- Expressive Arts and Design

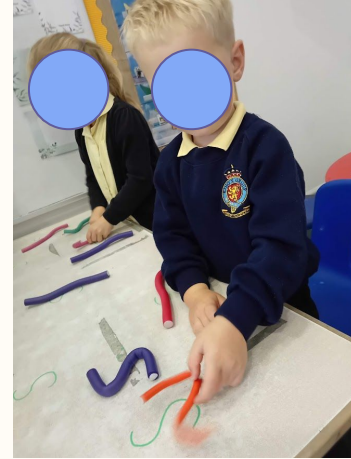


Our classrooms are organised to allow children to explore and develop their skills in each of these areas independently and at a level suitable for them.

# Communication and Language

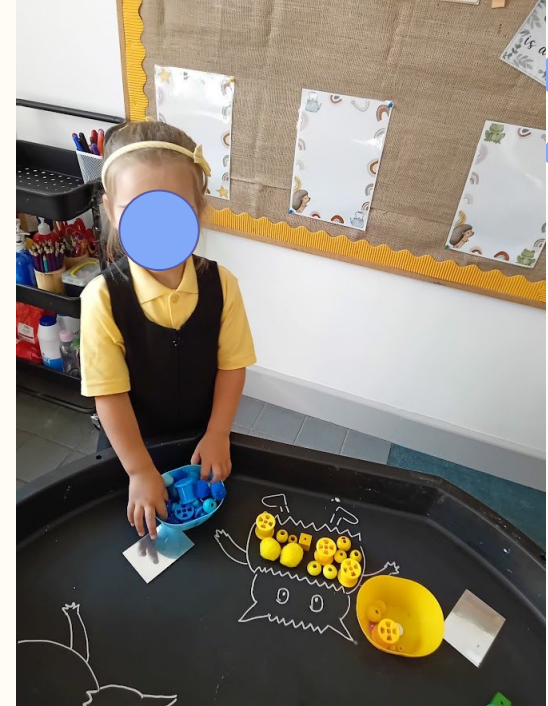


# Physical Development





# Personal, Social and Emotional



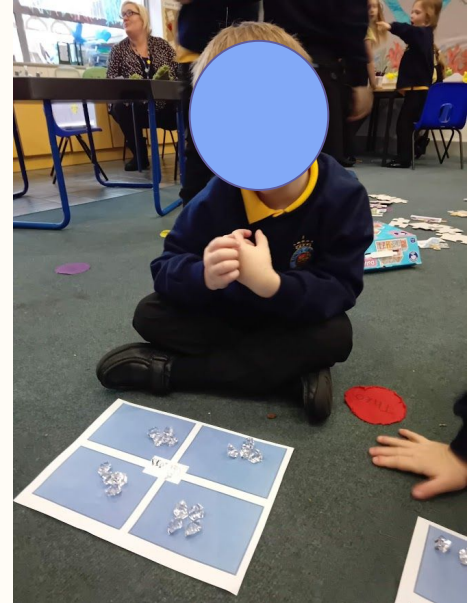
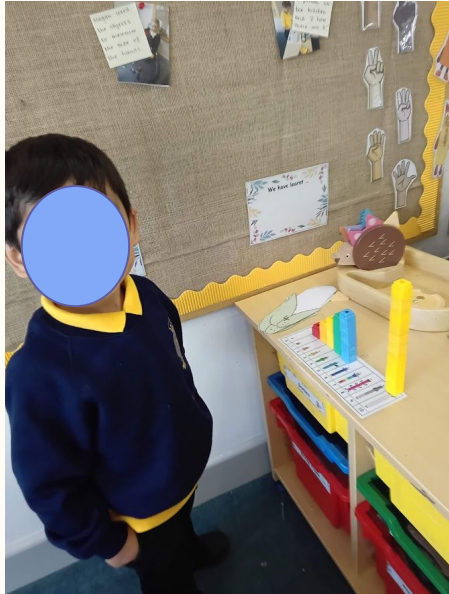
# Literacy

We are a reading school and promote the love of reading through our books corners, parent reading afternoons and lots of other events. We teach the skill of reading through our Phonic Scheme 'SuperSonic Phonic Friends'



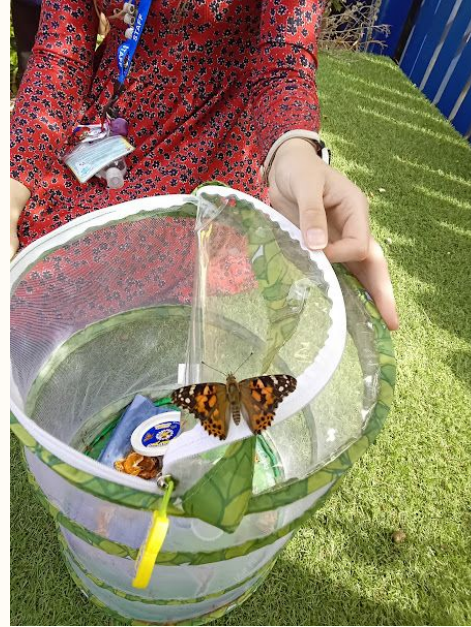


# Mathematics

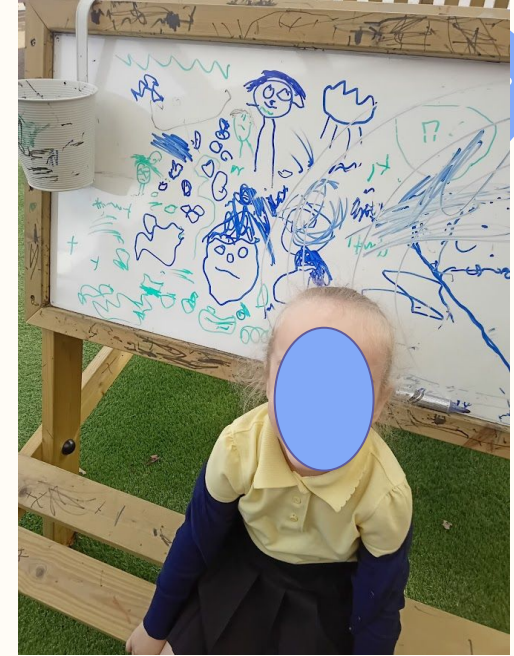




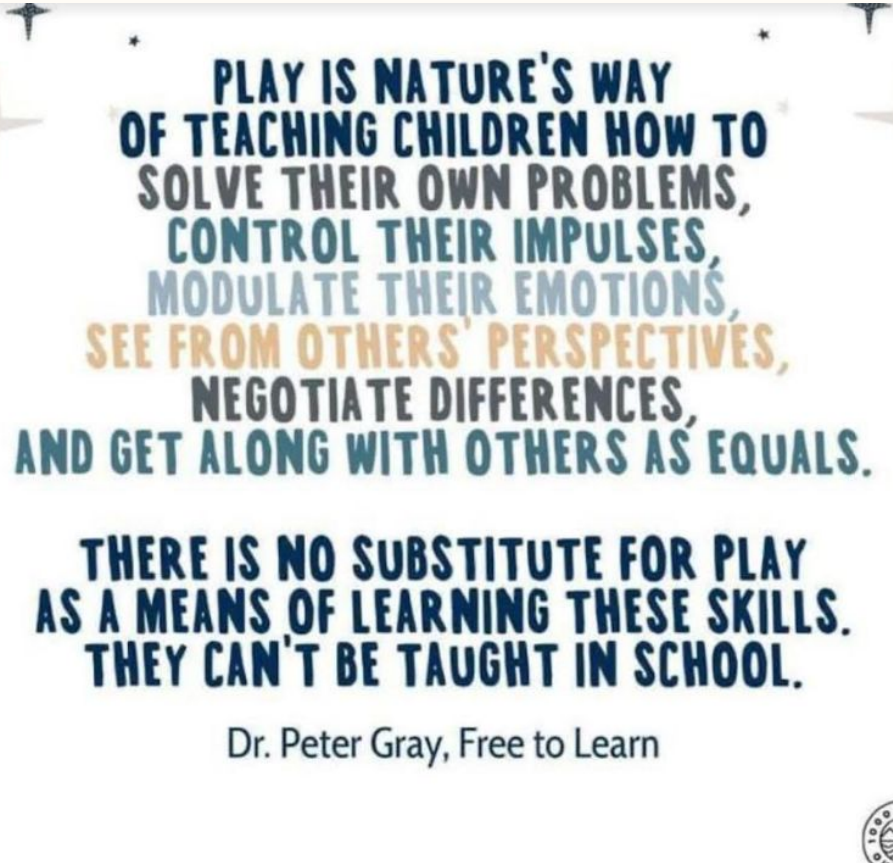
# Understand the World



# Expressive Arts and Design



# Play!





# Attendance

Our school target is 96%

Evidence must be seen for appointments during the school day

If your children will be absent from school, let us know using  
Studybugs.

The logo for Studybugs, featuring the word "Studybugs" in a white, rounded font and a green shield icon with a white plus sign, all set against a blue rectangular background.

Studybugs +

Did you know that attendance of 90% or lower is classes as  
'persistent absence' and can mean up to 4 weeks lost learning  
time!

# Uniform



It is incredibly important to us for the uniform to act as a social leveller, which is why we are asking for **no branding/logos** (e.g. Nike, Adidas etc) on items of clothing worn into school. These items should be reserved for wearing outside the school.

As you can imagine, for a school of our size, **labelling of all clothing is vital.**

## Suppliers:

**Hargreaves Promotions (opposite The Range)**

**Price and Buckland (online orders only)**

**We also host a number of pre-loved uniform sales throughout the year!**

# Uniform



As you can imagine, for a school of our size, **labelling of all clothing is vital.**

**Please ensure that PE kits match the weather, jumpers and trousers for the winter!**

# Lunches



- Staggered lunchtimes to reduce noise in the hall
  - All children eat in the hall
  - Lunches are provided by Caterlink
- Lunches are free for Infant School Children
  - Menus on websites



**TOP TIP - Chat to your children about what option they would like for lunch on your way into school!**

## **WE ARE A NUT FREE SCHOOL!**

People who suffer from nut allergies can develop a severe, potentially life-threatening allergic reaction. If someone has a nut allergy it is not just eating nuts that can cause a severe reaction, just being touched on the skin or smelling the breath of someone who has had nuts or a product containing nuts can trigger anaphylactic shock (which can cause breathing and swallowing difficulties).





# Free School Meals



All children in Years R, 1 & 2 have the offer of a free lunch at school, regardless of the family income, but all parents/carers should still apply for Free School Meals, so that eligible children can benefit from other schemes, such as holiday vouchers and the Holiday Activity programme. It also means that schools will receive the correct additional funding to enhance school budgets!

- Please submit your FSM application by 20 June 2025 to meet the deadline for the holiday supermarket scheme
- Eligible children may receive other support, such as free holiday programmes – HAF Fun Pompey and supermarket vouchers, when these are available.

Apply online 'PCC Free School Meals' (link will be included in the registration email)

<https://www.portsmouth.gov.uk/services/schools-and-learning/schools/school-meals/>

# Milk and Snack Time

**You do not need to do anything to register your child for milk!**

**You will be contacted when your child reaches the age of 5.**

**Information will be in your registration email being sent out this week.**

**Children have milk in the afternoon and a rolling snack throughout the day.**

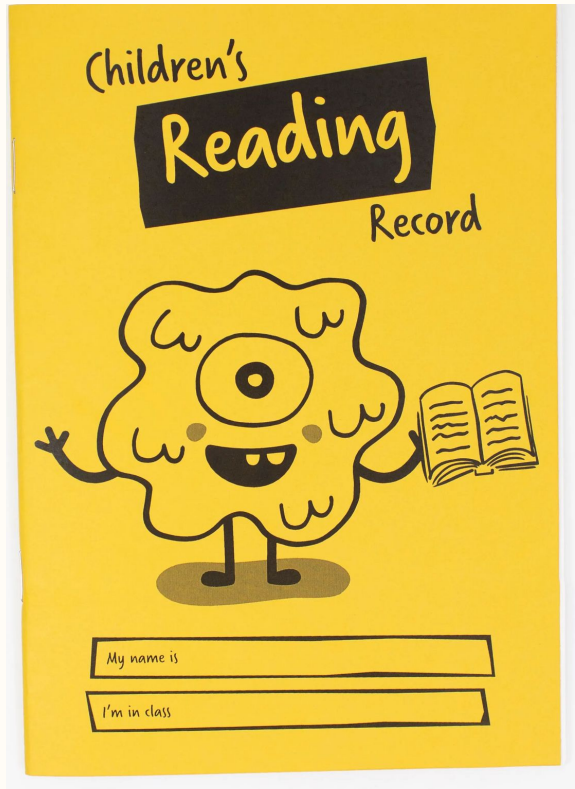


# Parents as Partners

We recognise the importance of parents and carers in a child's development. With this in mind, we provide opportunities for parents and carers to take an active part in their child's learning. We use an online platform called Tapestry to keep you up to date on what your child has been getting up to at school.



# Parents as Partners

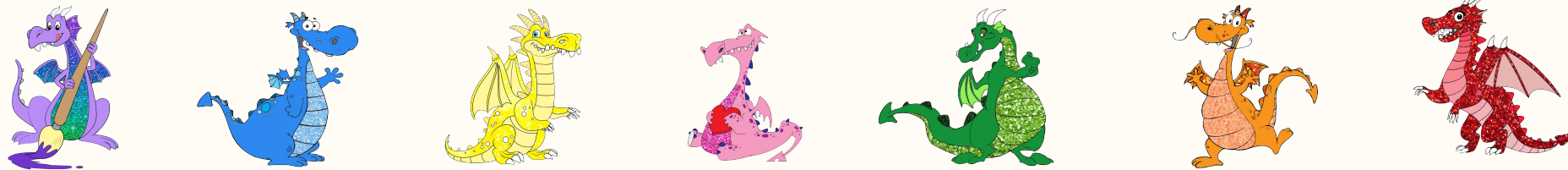


# Let's spend some time 'Getting to Know You.'

'Getting to know you visits' will be taking place from Thursday 4th September to Wednesday 10th September.

Your link for booking a 'Getting to Know You' visit booking link will be sent out on 18th July. If you are having trouble booking this, please do get in touch.

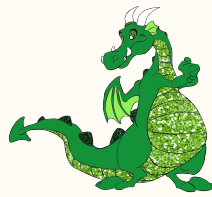
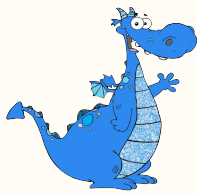
'Getting to Know You' visits involve your child's class teacher and LSA coming to your home to meet your child and their parents/carers, spending some time together getting to know each other.



# Wraparound childcare 'Kid's Club'

We are pleased to offer wraparound care for children whose parents or guardians are unable to drop off or collect them at the normal times.

If you require this service and any more information, please collect a registration booklet at the end of the meeting.





# Key Dates for your Diary

<b>JULY 17</b>  <b>Stay &amp; Play!</b> 10am-11am (surname A-K) 2pm-3pm (surname L-Z) Year R classrooms	<b>JULY 18</b>  <b>Stay &amp; Play!</b> 10am-11am (surname A-K) 2pm-3pm (surname L-Z) Year R classrooms	<b>JULY 18</b>  <b>Class placement and home visit link shared</b>
<b>SEPTEMBER 4-10</b>  <b>Stay &amp; Play!</b> (Drop & go) 9am - 10am Year R classrooms	<b>SEPTEMBER 4-10</b>  <b>Home visits</b> 10.30am - 4pm	<b>SEPTEMBER 11</b>  <b>First day of school for all students in Year R</b>



# Keep updated!



**You can find all the information we have covered today on our school website.**

**Parents will soon receive an email with important registration instructions .**

**Please check your inbox and complete the required steps promptly.  
Contact the office if you do not receive the email.**

# Thank You for coming!



SCAN ME

