



KING'S ACADEMY COLLEGE PARK



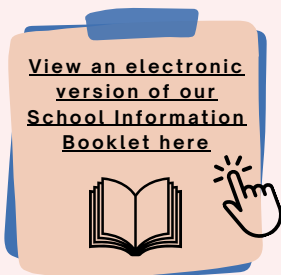
We hope you all enjoy the half term break!



School Communications

We will soon be moving over to Arbor to send communications out to parents. Please look out for an email from Arbor and setup your account as soon as possible.

From Friday 5th June, ParentMail will no longer be used!



Final Inset days of this year
(school will be closed to pupils)

- Tuesday 21st July
- Wednesday 22nd July








DON'T FORGET TO VISIT OUR WEBSITE FOR THE MOST UP TO DATE INFORMATION!

Take me there!

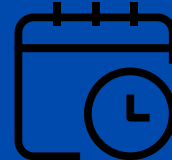




KEY EVENTS



1 st June	Year R Pirate day!
4 th /5 th June	 Year R NCMP checks 
11 th /12 th June	Year 5 Tudor workshops
12 th June	Year 4 College Park visit
17 th /18 th June	 Superman HQ! Father's Day events
23 rd June	New Year 3 Parent meeting
25 th June	Junior Sports day 
29 th /30 th June	Year 6 Portsmouth secondary school transition days
29 th June - 3 rd July	 International Week 
wb 29 th June	Year 3 Chichester Harbour trips 29 th June - Chipmunk 30 th June - Wolverine 1 st July - Reindeer 3 rd July - Brown Bear
2 nd July	 Infant Sports day
3 rd July	Plastic Free day
3 rd July	Year 2 Marwell Zoo 
7 th July	Year 2 Performance (Giraffe & Zebra classes)
8 th July	Year 1 Tuppenny Barn (Wombat & Emu classes)
9 th July	Year 2 Performance (Lion & Elephant classes)

KEY EVENTS



10 th July		Year 6 Performance
11 th July		KACP Summer Fete!
13 th July		Year 1 Tuppenny Barn (Dingo & Koala classes)
14 th - 15 th July		KACP transition days
16 th July		Year 2 Leavers' Festival
16 th July		Year 6 Leavers' Party
20 th July		Year 2 Leaver Assembly Year 6 Leaver Assembly Whole School Leaver Picnic



Library visits



17th June - Emu class

24th June - Dingo class

1st July - Koala class



Message from Mrs Carlyle

Dear Parents and Carers,

Wow – another half term nearly crossed off! As I always say, school life has been incredibly busy, but also very exciting.

There have been trips taking place across the school, with our Year R and Year 1 children particularly enjoying their visits to the library. A huge thank you to all the parents who supported these trips. Without your help, many of these opportunities simply would not be possible.

We have also proudly represented the school at both boys' and girls' football tournaments. Changes to our lunchtime routines for the Junior children have really helped the girls grow in confidence on the football pitch. The Lionesses would certainly be proud of you all – just as we are!

Sadly, we did have to cancel a recent basketball event, which I know was disappointing for both the children and staff. Unfortunately, this was due to transport issues that arose at the last minute.

It is also important to acknowledge our Year 6 children and staff. SATs week always brings a huge sense of pressure, but the children were absolutely incredible. The way they approached the week showed such maturity, resilience, and positivity. Thank you to you as parents for your constant support, and to the staff who have worked tirelessly to ensure the children have had the very best opportunities to succeed.

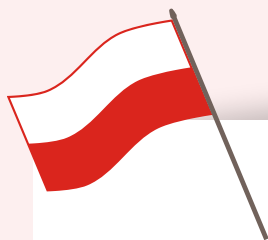
This week we have also had school photos – and the excitement this creates never fails to make me smile! Today we held our Big Reading Picnic, and it was wonderful to see our KACP community come together for the event.

On that note, I hope you all enjoy a well-deserved half term break. If the weather forecast is to be believed, the sunshine is going to be very kind to us! Take the opportunity to rest, recharge, and enjoy some family time.

Thank you again for your continued support.

Mrs Carlyle

NOTICES



**HELP
NEEDED**

Our language of the half term for Summer 2 is Polish

We are hoping that some of our Polish families may be willing to come in and support with assemblies, running short sessions to teach some language and share information about the culture and history of Poland. If you or a family member are willing to help, please email us at contact.cp@kingsacademies.uk.

Extra Curricular Clubs

On our website, you can view our large range of extra curricular clubs and activities on offer!

[Extra Curricular activities at KACP](#)

Extra Curricular activities provide students with valuable opportunities to develop important life skills such as leadership, teamwork and social connections. They also contribute to personal growth and help your child build confidence.



price-buckland.co.uk

Price & Buckland
SCHOOLWEAR SINCE 1988

ORDER YOUR UNIFORM ONLINE
QUICK, EASY, FAST

**ORDER BY
1ST AUGUST**
for pre-September
delivery.

Orders placed after this date risk arriving after the start of term due to peak demand.



Scan
Me!



★ Trustpilot



"Great quality. Fast and friendly service"

SIGN UP FOR EXCLUSIVE
DISCOUNTS AND
OFFERS!

We are seeking a highly organised and professional Governance Partner to support our Local Governing Body, here at KACP. This is a fantastic opportunity to play a vital role in supporting the leadership and success of our school community. If you are detail-focused, efficient, and looking to make a difference behind the scenes, we would love to hear from you.

Please contact the school for further information and application details.

**JOIN OUR
TEAM**

NOTICES

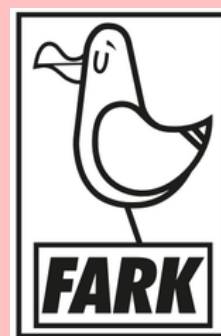
The Information Commissioner's Office (ICO) has launched the Switched on to privacy campaign. This is designed to help parents and carers have conversations with their children about online privacy

Switched
ON
to privacy



Fark Competition

Don't forget to hand in your bird design competition entry by 1st June.



easyfundraising partners with over 8,000 retailers who will donate part of what you spend to a cause of your choice. It won't cost you any extra!

Please [click here](#) to help our school raise money by shopping.

Support us
through



ACHIEVEMENTS

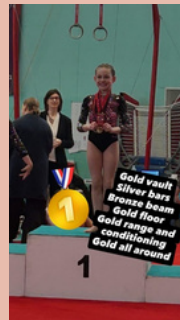


Yvette,
Year 1

Yvette recently took part in the Xcel Gymnastics Competition. She achieved 1 gold medal and 4 bronze medals! Yvette overcame her nerves and the performances were full of confidence.

**Such incredible achievements
Yvette, well done!**

Bobbi, Year 4



Bobbi competed in the southern region grades at Dynamo, and for her group (pre excel), she was awarded gold vault, silver bars, bronze beam, gold floor, gold range & conditioning and gold all around.

Excellent work Bobbi, keep it up!

Elsie, Year 3 &
Daisy-Rae, Year 4



Elsie recently performed at Fareham festival and won the 7 year aggregate cup for her dancing solos.

Elsie and Daisy-Rae won the tap cup for their age groups at Portsmouth festival.

**Fantastic girls, you
are superstars!**

Noah, Year 2



Noah successfully completed his grading with Bravo Karate. He was awarded his 6th Kyu Red Belt after demonstrating great focus and discipline.

Brilliant work Noah!

ACHIEVEMENTS



Cohen, Theo, Dylan & Freddie, Year 4



Cohen, Theo, Dylan and Freddie recently won the Under 9 Warrior Football cup final. They all played amazingly well and it came down to a penalty shoot out! The boys have only been with their squad for 1 season and beat 18 teams to get to the final demonstrating hard work, determination and teamwork.

**Wow, what a way to win,
huge well done to you all!**

**Please keep sending us your child's
achievements, we love to celebrate
and share them!**

contact.cp@kingsacademies.uk

Charlie, Year 3



BIG Congratulations to Charlie and his team on reaching their cup final! They played their hearts out recently in the pouring rain in the Portsmouth Youth Football League.

A fantastic achievement and well deserved after their continued hard work across the entire season.

Amazing achievement Charlie!

Local Information & Events



 Portsmouth
 CITY COUNCIL

ARE YOU SUPPORTING SOMEONE WHO IS AUTISTIC OR NEURODIVERGENT?



**ROOM ONE
LOVED ONES GROUP**

Join our **friendly** group to share your thoughts, feelings and recent experiences with people who **understand**.

Meet other carers and loved ones who may be **supporting** adults or children with **neurodiversity**.

Everyone at the group has **lived experience**, including the facilitators: Laura (Portsmouth Carers Service) and James (Room One).



 **2nd & 4th Friday of the month**
 **10:00 - 12:00**
 **Carers Centre, PO4 0AD**

Portsmouth Carers Service
 117 Orchard Road, Southsea, PO4 0AD
 Email: carerscentre@portsmouthcc.gov.uk
 Tel: 023 9285 1864
www.portsmouthcarersservice.co.uk



 RAW
 KIDS GYMNASTICS
 PORTSMOUTH

COME JOIN US

RAW Kids Gymnastics Portsmouth provides children's gymnastics classes throughout the full week!

For ages: 18 months to 7 years

BOOK YOUR TRIAL CLASS TODAY!

SCAN ME → 

CONTACT US-

 EMAIL: RAWKIDS@THEBOXPORTSMOUTH.COM
 TELEPHONE: 07971 755579
 WEBSITE: [HTTPS://WWW.RAWKIDSGYMNASTICS.CO.UK/PORTSMOUTH](https://www.rawkidsgymnastics.co.uk/portsmouth)
 THE BOX PORTSMOUTH, 235 COMMERCIAL RD, PORTSMOUTH, PO1 4BJ





DESIGNEDLY

MOVE

KIDS & TEENS



 SCAN ME

MON 5-8yrs 16:40-17:25	TUE 13-19yrs 16:30-17:30	WED 9-12yrs 16:30-17:15
SAT 5-12yrs 08:00-08:45	SAT 13-19yrs 10:00-11:00	TRIAL FOR £7




✓ Build strong physical foundations
 ✓ Improve confidence and self esteem
 ✓ Teaches how to overcome challenges
 ✓ Develop social skills
 ✓ Enhanced posture and coordination

CONTACT
 07971 755579
ldv@designedly.co.uk

WEBSITE
www.designedly.co.uk/move

 **THE BOX PORTSMOUTH** 235 Commercial Rd, Portsmouth, PO1 4BJ



May Camps



 PH CAMPS

4-14 years



 Ofsted
 Registered

26TH MAY - 29TH MAY

Early Bird Prices

	DAY	WEEK
Breakfast Club (08:00 - 09:00)	£5.00	£20.00
Day Booking (09:00-15:00)	£31.00	£139.50
Extended Club (15:00 - 16:00)	£5.00	£20.00
Extended Club (15:00 - 17:30)	£10.50	£42.00

BOOK NOW
www.phcamps.co.uk
 01225 701830
bookings@phcamps.co.uk





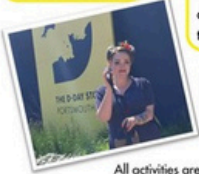
Local Information & Events

What's on for families at The D-Day Story

Sunday 10th May: VE Day Celebrations

Join us for our VE Day celebrations with entertainment for all the family throughout the day.

Singer Nathalie Gunn will be performing songs from the 1930s and 1940s.



There will be an opportunity to learn how to swing dance and Lindy Hop with the Swing Dance Company.

Join Mrs Cox for craft activities and make your own paper chains, posters, hats and badges to take home.

Take part in our 'Spies and Lies' family trail and take home a free The D-Day Story backpack.



All activities are included in the museum admission price or annual pass.

Please check the website for timings.

May and June

The Discovery Hub

May half term: 27th and 28th May

During the Second World War, toys and games were often handmade. Come and make your own toy aeroplane, peg doll and pinwheel to take home. Or why not create our VE Day inspired paper flowers, flags and bunting.

With toys and games for little ones under five, and Second World War uniforms for all the family to try on, we have something for the whole family to enjoy.

Free with a museum ticket or annual pass, or £3 per child if not visiting the museum.

D-Day Detectives Family Trail

16th May - 7th June

Come to the museum to discover the incredible facts, figures and personal stories about D-Day, the largest amphibious invasion ever assembled.

Complete our family trail for a chance to enter our prize draw and win either a Gustav pigeon soft toy, The D-Day Story goody bag or a D-Day detectives discovery kit.

Free with a museum ticket or annual pass.



What's on at The D-Day Story throughout the year

What is there to see at the museum?

Visit the only surviving, preserved Landing Craft Tank (LCT 7074) in the world.

See the story of D-Day told through the hand-stitched Overlord Embroidery. It's an amazing 83 metres long.

The museum galleries have interactive displays, games and audio-visually as well as original Second World War vehicles, objects and uniforms.



Family activities throughout the year

For ages 7+

Family trail: Resist!

Inspired by the French Resistance. Can you solve clues and puzzles as you explore the museum?

Designed for families with 9-14 year olds.

Family audio guide

Would you have risked everything to resist occupying Germans? Borrow our free family audio guide to learn more about those who did. Developed for the whole family to experience together.



Did you know we're a Blue Peter attraction?

Badge holders can visit for free with a paying adult. Just show your badge and card when buying your ticket.

Gustav the pigeon

Can you spot all the Gustav pigeons hidden around the museum?



Ticket prices

Family (2 adults and up to 3 children)	£45.50
Adult	£18.25
Senior (60+)	£14.55
Children (5-17)	£9.15
Under 5s	free

With a Portsmouth leisure card you can get 40% off admission.

Did you know for a small additional cost, you can upgrade your ticket to an annual pass. See our website for details.

The D-Day Story, Clarence Esplanade, Portsmouth, PO5 3NT

Telephone: 023 9288 2555

Email: theddaystory@portsmouthcc.gov.uk

theddaystory.com



Portsmouth's Cost of Living Hub

Portsmouth's Cost of Living Hub which brings together local advice on energy, food, finances and wider household support.



Support with energy bills

Families can find practical help to reduce energy costs through Switched On Portsmouth, or by calling the free helpline on 0800 260 5907. Families on a low income or receiving a disability benefit may be eligible for a free home energy advice visit. Many energy and water companies also offer social tariffs with lower rates for people on low incomes. Families should contact their suppliers or check company websites to see if they qualify.

Local Information & Events



HM Naval Base (PP66)
Portsmouth
PO1 3NH

E-mail: enquiries@royalnavymuseums.org.uk

Dear parent,

We are creating a new online space for families to explore science, technology, engineering and maths (STEM) together at home. The hub will be a **one-stop place** where you can:

- Try fun activities and challenges
- Watch short videos
- Learn about real-life jobs (including the Royal Marines and Navy)
- Find ideas for things to do at home
- Access downloadable resources
- Link to our shop for activity kits

We want to make it as easy and useful as possible for families—so your feedback really matters.

We would really appreciate your comments and feedback via this online form, all responses are confidential and anonymous and should take no longer than 5 minutes to complete.

[Help Us Build Our New STEM Hub – Fill in form](#)

Sincerely,

Sharna Bennett
Performance & CRM Lead

Royal Navy Museums
Patron: HM The Princess Royal KG KT GCVO DSO
CEO: Matthew Sheldon
Company Registration No: 6099696
Charity Registration No: 1126283



Hive Portsmouth offer a wide range of services, including a second-hand uniform shop, community stay and play sessions, toy loan sessions, a free baby bank for essential items, specialized family support to keep children engaged in school, and a Family Information Service.

Click to read
Portsmouth Museums
Spring/Summer
Programme offer



Local Information & Events

FIRST SESSION FREE WITH THIS LEAFLET!



GIRLS ONLY FOOTBALL!



FOR ALL GIRLS INTERESTED IN FOOTBALL AGED 4 - 13

WEEKLY TECHNICAL SESSIONS AND MINI GAMES

MEDALS AND AWARDS EACH WEEK

EVERY SATURDAY 9-10 @ GOALS PORTSMOUTH | £5

WWW.SOCCERSCHOLARACADEMY.COM | SOCCER SCHOLAR ACADEMY JUNIORS

INFO@SOCCERSCHOLARACADEMY.COM | @SOCCERSCHOLARACADEMY



SCAN ME



FUNKIDZ
CONFIDENCE THROUGH PERFORMANCE

HALF TERM CLUB




BAFFINS COMMUNITY CENTRE

DANCING
CRAFTS
GAMES &
MORE!

**THURSDAY
28TH
MAY
9-2PM**

£20 PER DAY OR £35 FOR BOTH (SIBLING DISCOUNT AVAILABLE)

LovetoLearn
PROFESSIONAL TUITION CENTRE

SUMMER SCHOOL
Portsmouth

2026



WEEK 1
9-11am • Mon 10th - Fri 14th August

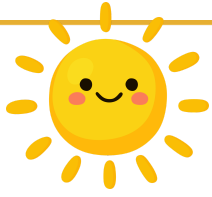
WEEK 2
9-11am • Mon 17th - Fri 21st August

Reading Maths
Writing 10 hours of tuition
Spelling Perfect for 11+ and GCSE



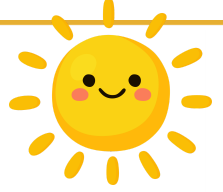
Call now on **02393 96 86 26**
www.ilovetolearn.co.uk

Portsmouth Leisure Card



With the summer holidays approaching...

Check to see if you could be entitled to a Portsmouth Leisure Card.



It offers discounts of up to 50% at some Portsmouth City Council facilities as well as other services and attractions.

The Card is free and available to those who receive means-tested benefits living within PO1 – PO6 areas of the city (some properties in PO7 qualify where these pay council tax to Portsmouth City Council).

You can enjoy discount/reduced rates at:

- BH Live sports centres
- Hilsea Lido
- Salterns golf course
- Portsmouth Historic Dockyard
- Southsea Skatepark and the Underground Skatepark
- Weekly beach hut rental
- Allotments and much more.

Please note discounts do vary, and a complete listing will be sent with your Leisure Card.

If you choose to opt-in to receive marketing emails, you will receive Leisure Card member updates on free and low-cost local events and activities happening within the city.

The Leisure Card is valid for 12 months and you can reapply when the card expires, if still eligible.

* How to apply: visit the Portsmouth City Council website, search for Leisure Card and apply online www.portsmouth.gov.uk or you can visit your local library, community centre or housing office and ask for an application form (please bring along proof of the benefits to be checked)

Eligible benefits.

- > Universal credit
- > Housing benefit
- > Council Tax Support (excludes statutory 25% single persons discount)
- > Pension credit (guarantee credit element only)
- > Foster carers with foster children (use the online application form and upload a signed letter from your supervising social worker as evidence)
- > Children & Young Adults in Supported Accommodation – (aged 16 – 25yrs cared for by PCC - validated by their social worker or PCC sponsor's letter)

If you have any questions; call 02392 688797 or email CulturalServices@portsmouthcc.gov.uk

King's Academy College Park

2026 - 2027 School Calendar

August						
Su	M	Tu	W	Th	F	S
						1
2	3	4	5	6	7	8
9	10	11	12	13	14	15
16	17	18	19	20	21	22
23	24	25	26	27	28	29
30	31					

September						
Su	M	Tu	W	Th	F	S
		1	2	3	4	5
6	7	8	9	10	11	12
13	14	15	16	17	18	19
20	21	22	23	24	25	26
27	28	29	30			

October						
Su	M	Tu	W	Th	F	S
				1	2	3
4	5	6	7	8	9	10
11	12	13	14	15	16	17
18	19	20	21	22	23	24
25	26	27	28	29	30	31

November						
Su	M	Tu	W	Th	F	S
1	2	3	4	5	6	7
8	9	10	11	12	13	14
15	16	17	18	19	20	21
22	23	24	25	26	27	28
29	30					

December						
Su	M	Tu	W	Th	F	S
		1	2	3	4	5
6	7	8	9	10	11	12
13	14	15	16	17	18	19
20	21	22	23	24	25	26
27	28	29	30	31		

January						
Su	M	Tu	W	Th	F	S
					1	2
3	4	5	6	7	8	9
10	11	12	13	14	15	16
17	18	19	20	21	22	23
24	25	26	27	28	29	30
31						

February						
Su	M	Tu	W	Th	F	S
	1	2	3	4	5	6
7	8	9	10	11	12	13
14	15	16	17	18	19	20
21	22	23	24	25	26	27
28						

March						
Su	M	Tu	W	Th	F	S
	1	2	3	4	5	6
7	8	9	10	11	12	13
14	15	16	17	18	19	20
21	22	23	24	25	26	27
28	29	30	31			

April						
Su	M	Tu	W	Th	F	S
				1	2	3
4	5	6	7	8	9	10
11	12	13	14	15	16	17
18	19	20	21	22	23	24
25	26	27	28	29	30	

May						
Su	M	Tu	W	Th	F	S
						1
2	3	4	5	6	7	8
9	10	11	12	13	14	15
16	17	18	19	20	21	22
23	24	25	26	27	28	29
30	31					

June						
Su	M	Tu	W	Th	F	S
		1	2	3	4	5
6	7	8	9	10	11	12
13	14	15	16	17	18	19
20	21	22	23	24	25	26
27	28	29	30			

July						
Su	M	Tu	W	Th	F	S
				1	2	3
4	5	6	7	8	9	10
11	12	13	14	15	16	17
18	19	20	21	22	23	24
25	26	27	28	29	30	31



School Holiday



Bank Holiday



Inset Day

Inset days

- Tuesday 1st September 2026
- Wednesday 2nd September 2026
- Friday 4th December 2026
- Friday 5th February 2027
- Tuesday 20th July 2027
- Wednesday 21st July 2027